



### SS4 - Single Strike CMYK



CMYK x 1

UV 4 colour process ink set to produce stunning full colour images onto digiglass optically clear film. When printed on clear film, the area of image which would normally be white will be transparent, giving a translucent quality to the image when applied to glass.

### DS4 - Double Strike CMYK



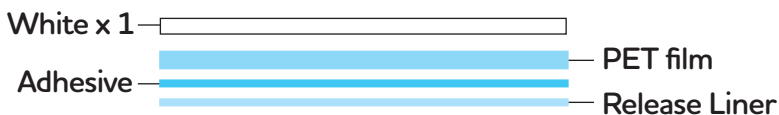
CMYK x 1



CMYK x 1

UV 4 colour process ink set to produce stunning full colour images onto digiglass optically clear film. By “double striking” the print we add extra density to the colour. This ensures when viewed with the light behind the image (in a brightly lit room for example), your graphics do not appear pale and washed out. When printed on clear film the areas of image which would normally be white will be transparent, giving a translucent quality to the image when applied to glass.

### SS1 - Single Strike White



White x 1 (shown as black)

UV white ink onto digiglass optically clear film. The use of white ink allows us to create a range of interesting effects, including geometric patterns and fades/graduations. These are becoming increasingly popular as an alternative to traditional frosted effect window film.



### DS1 - Double Strike White



White x 1



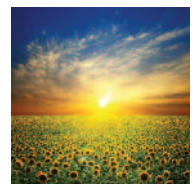
White x 1

UV white ink onto digiglass optically clear film. By “double striking” the print, we add extra density to the ink. This ensures that when viewed with light behind the image (in a brightly lit room for example) your graphics do not appear washed out. The use of white ink allows us to create a range of interesting effects, including geometric patterns and fades/graduations. Once again these are becoming increasingly popular as an alternative to traditional frosted effect window film.

### DS5 - Double Strike CMYK with white in process



CMYK x 1



CMYK x 1

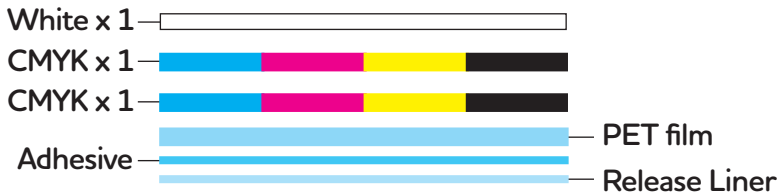


White x 1 (in process)

UV standard 4 colour process ink set with the addition of white ink to produce stunning full colour images and special effects onto digiglass optically clear film. By “double striking” the print, we add extra density to the colour. This ensures that when viewed with light behind the image (in a brightly lit room for example) your graphics do not appear pale and washed out. The addition of white ink to selected areas can enhance the opacity of pale colours and white areas within the image which would otherwise appear transparent or very washed out. The white ink may also be used as a spot colour - for example, to add white text or graphics to your design.

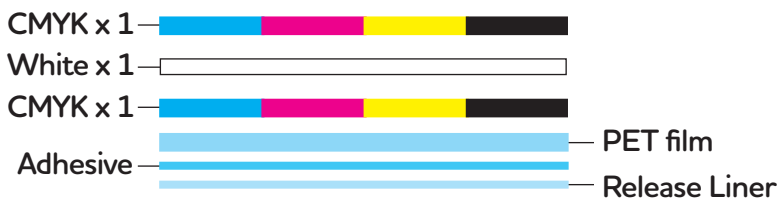


### P1S - Multi-Layer - CMYK/CMYK/White



P1S Multi layer - Print in multiple layers on top of each other onto digiglass optically clear film. In this case, a conventional CMYK image printed double strike sits above a layer of white ink. This allows a colour image to appear very much as it would when printed on a conventional white media when viewed from one side of the glass only. When viewed from the reverse side, the image will appear as a white silhouette. This is particularly useful to maximise the visibility of graphics when it is only necessary to see them from one side of the glass, for example, on glass entrance doors.

### P2S - Multi-Layer - CMYK/White/CMYK



P2S Multi layer - Print in multiple layers on top of each other onto digiglass optically clear film. In this case, a conventional CMYK image printed double strike sits either side of a layer of white ink. This allows a colour image to appear exactly as it would when printed on a conventional white media viewed from either side of the glass. This is particularly useful to maximise the visibility of graphics from both sides.